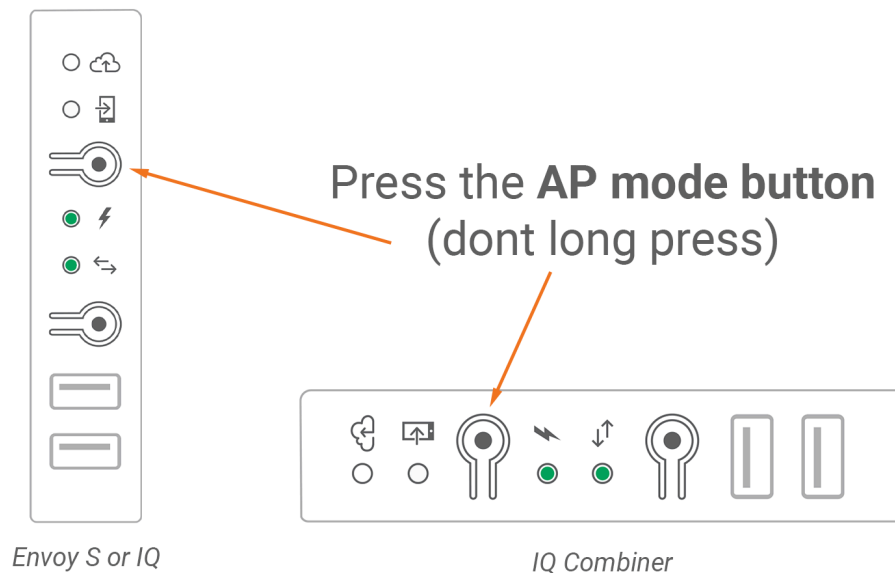


Reconnecting your Envoy S or IQ Gateway using manual Wi-Fi setup

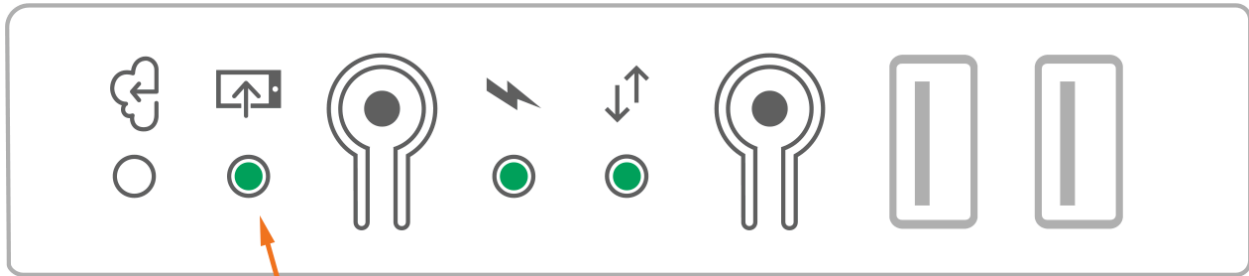
Follow these steps to get your Gateway back online

Step 1: Enable Gateway AP mode



Briefly press and release (do not hold) the AP mode button on your Gateway. Doing this will enable AP Mode (access point mode) on your Gateway, creating a wireless network you can join with your phone or laptop.

The AP mode LED (The second LED next to the phone icon) should light up solid green to indicate your Gateway is currently in AP mode.



AP mode LED

Do not long press. Doing so will enable the WPS mode. If you accidentally pressed the button for too long, don't worry. The WPS pairing will timeout in two minutes.

If your Wi-Fi router has a

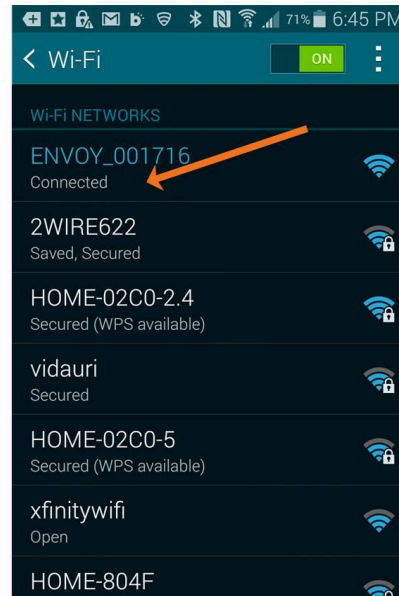


WPS button on it, you can also try reconnecting your Gateway using the WPS method. [Click here](#) to follow the Wi-Fi Protected Setup (WPS) method.

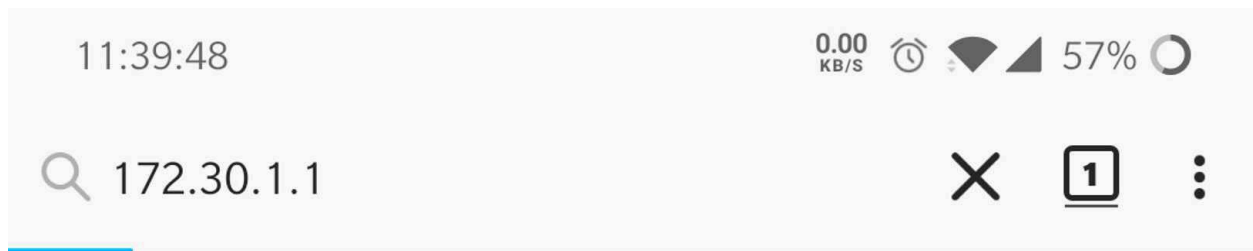
Step 2: Connect your phone/laptop to the Gateway

Navigate into your phone's or laptop's Wi-Fi settings and connect to the Wi-Fi network titled Envoy_XXXXXX, where "XXXXXX" is the last six digits of your Gateway's serial number.

Keep note of the last 6 digits (The "XXXXXX" part) of your Gateway's serial number. It will come in handy a bit further in this troubleshooting process.



Now open a browser on your device (Chrome, Internet Explorer, Firefox, etc.), and in the address bar, type in 172.30.1.1 (Don't forget the dots!).



Doing so will bring you to the Gateway Configuration page.

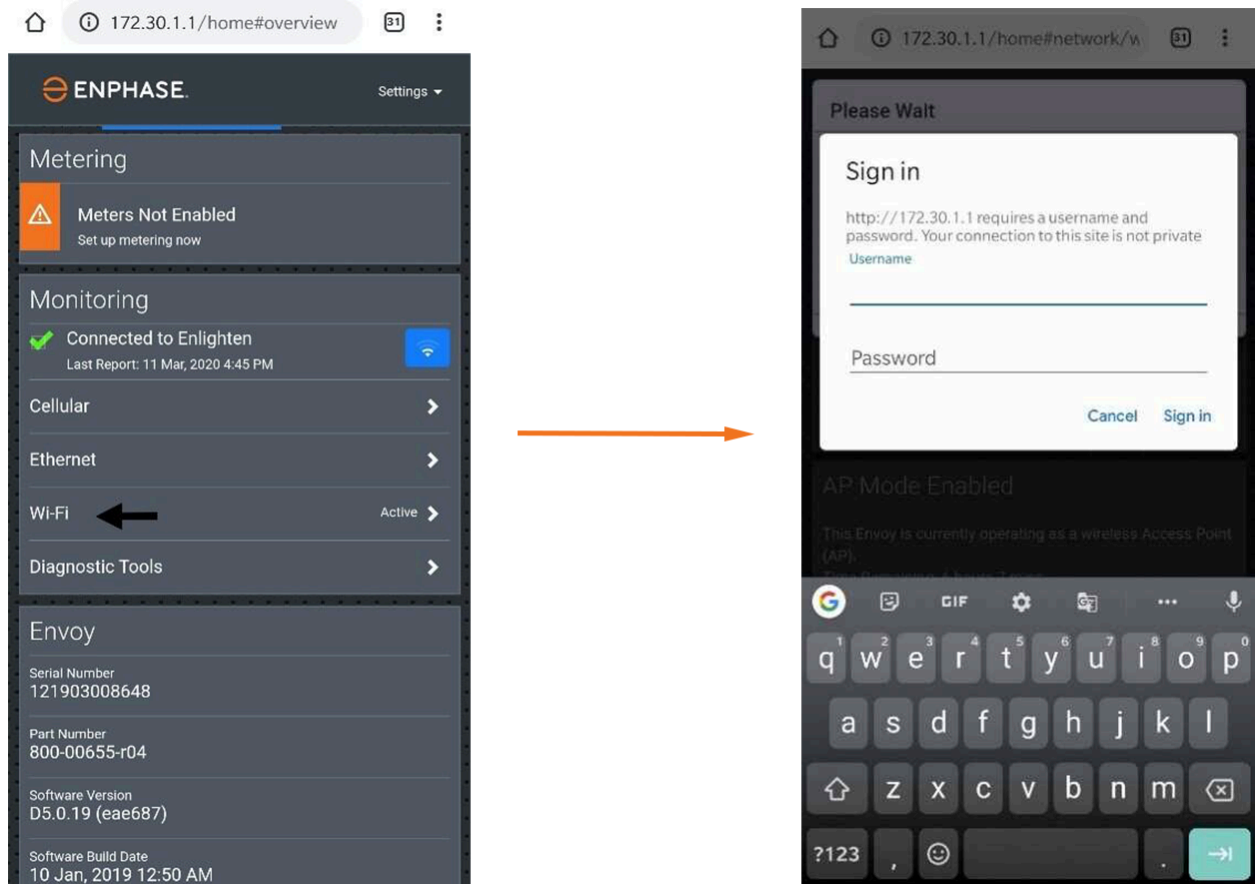


Step 3: Forget the old Wi-Fi network.

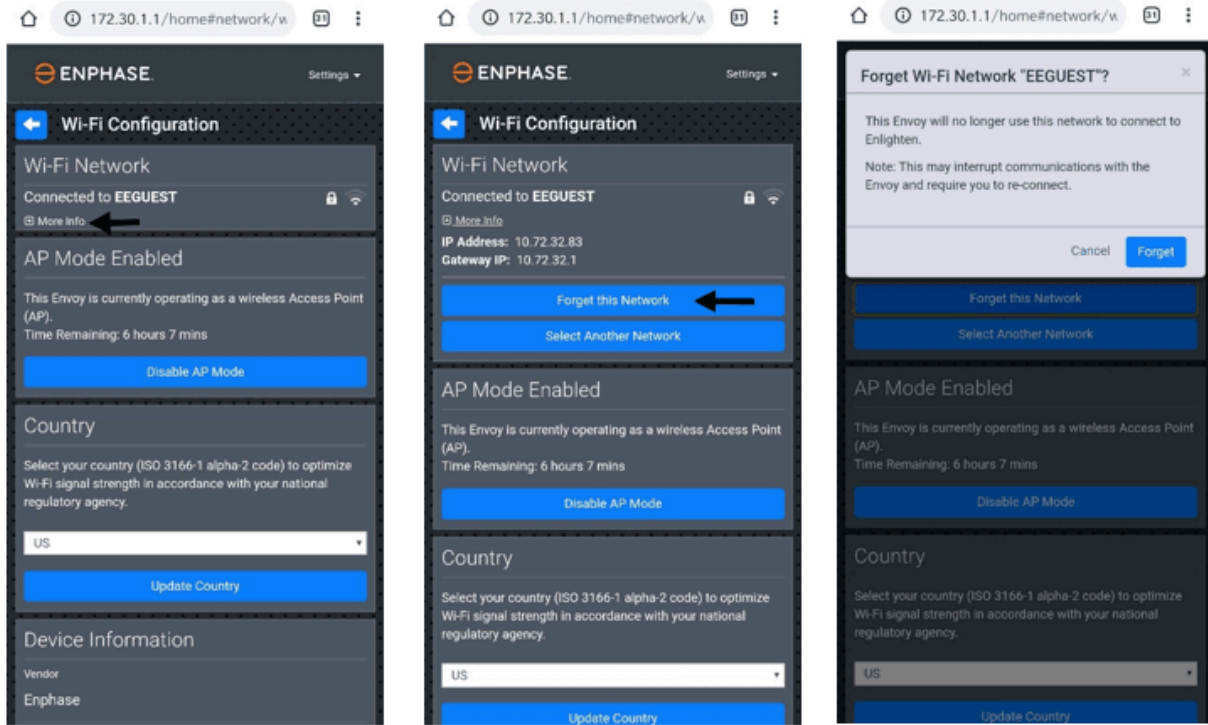
network, you can skip this and jump ahead to step 4.

If your system is currently not connected to any Wi-Fi

On the Gateway Configuration page, tap on Wi-Fi in the Monitoring pane. When prompted, provide the Gateway Username (envoy) and password (*last six digits of the Gateway's serial number*).



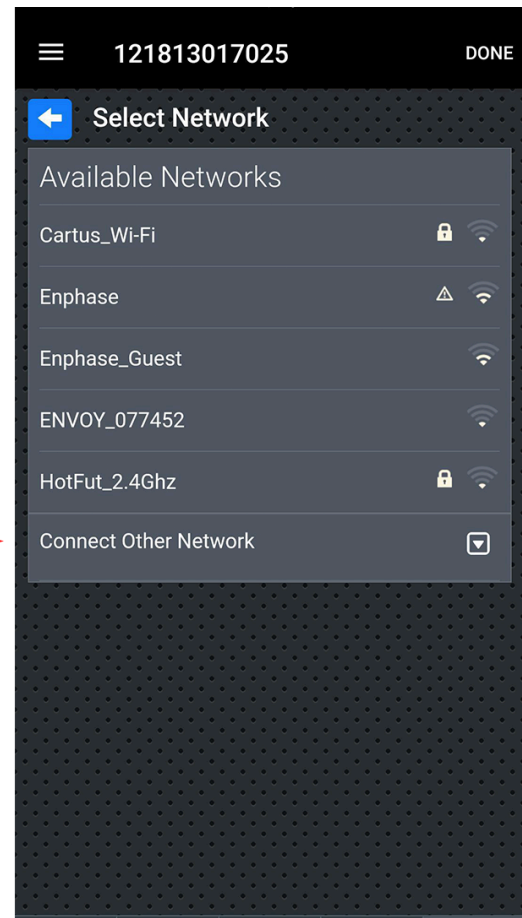
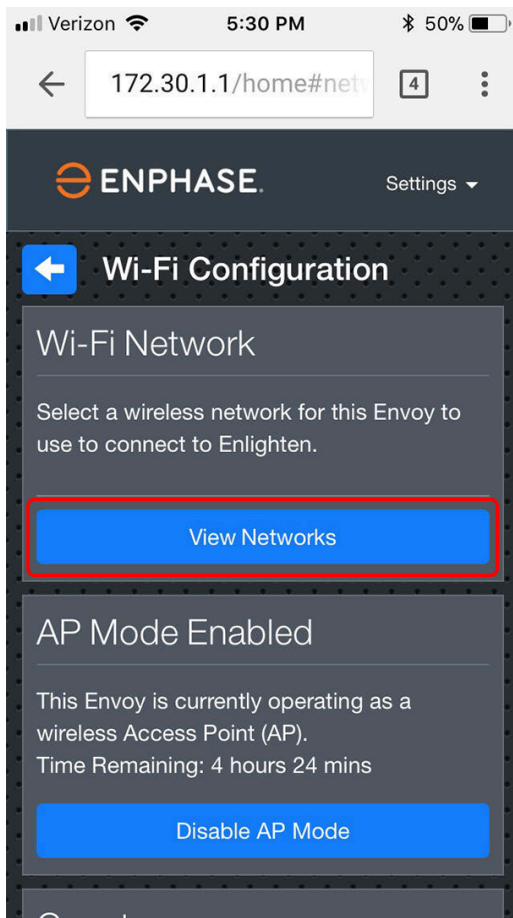
On the Wi-Fi configuration page, select More Info > Click Forget this Network > Click Forget.



Doing this will disconnect the Gateway from any previously connected Wi-Fi networks enabling it to be connected to a new network.

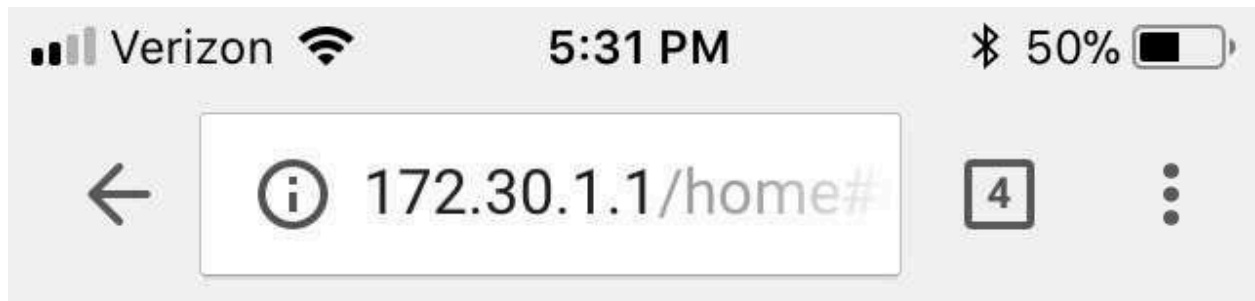
Step 4: Connect the new Wi-Fi network.

Tap the View Networks button, then select your home network from the list of available networks.



If your home WiFi does not show up in the above list, check if the Gateway is in range of your Home WiFi network.

Enter the password for your home network and tap Connect.



Enter the password for EEGuest.

Note: This may interrupt communications with the Envoy and require you to re-connect.

Cancel Connect

A light purple dialog box with rounded corners. It contains a text prompt, a password input field, a note about potential communication interruptions, and two buttons at the bottom: 'Cancel' and 'Connect'.

EELab		
ENPH2220		
ENPH5		

A dark-themed table with three rows. Each row contains a device name, a status icon (lock or warning), and a Wi-Fi icon.

Check if the connection was successful.



Envoy S/ IQ Gateway



IQ Combiner

If the top LED light against the cloud icon lights up solid green; Congratulations! You're back online.

Why is my Gateway LED still red and why don't I see my production data even after my Gateway has been reconnected to the internet?

It takes some time for the backed-up data to sync up with Enphase Cloud. Typically it takes about 1 hour for each day of your Gateway being offline. For example, if your Gateway was offline for 30 days your system should fully sync up in about 30 hours.

Take from Enphase <https://support.enphase.com/s/article/Reconnecting-your-Envoy-ManualWifi>
VIDEO LINK <https://support.enphase.com/s/article/Reconnecting-your-Envoy-ManualWifi>